



**Township of Woolwich  
Heritage Committee  
Agenda**

**September 11, 2024**

**5:00 p.m. - 6:00 p.m.**

**Council Chambers**

**24 Church Street West, Elmira ON, N3B 2Z6**

Chair: Councillor Bonnie Bryant

**Access Details**

Meeting Link

Meeting ID: 894 4250 8289

Passcode: 068142

Toll-Free: 855-703-8985

**Pages**

**1. Land Acknowledgement**

The land on which we meet has been here from time immemorial. People have inhabited southern Ontario for about 10,000 years and we acknowledge the Neutral people also called Attawandaron, Anishinaabe, and Haudenosaunee Peoples who lived here when settlers arrived and who share this land with us. May we together learn to care for and respect each other, our flora and fauna, and the land we inhabit together.

**2. Call to Order**

**3. Disclosure of Pecuniary Interest**

**4. Adoption of Minutes**

1

**5. June 12, 2024 Action items Review**

6

**6. Work Plan**

7

**7. Special Guest Invitation Updates**

**8. West Montrose Bridge - Heritage Designation By-Law 60-2007 Amendment Update**

**8.1 Removal of the White Cladding**

12

**9. Reclaimed Materials**

**9.1 Old Winterbourne School House Timbers**

- 10. Heritage Day (Sept 24, 2024) Plans 13**
- 11. Local Summer Heritage Research Update**
- 12. Elmira Carnegie Library Cultural Heritage Evaluation Report Update**
- 13. New Business**
- 14. Items for the Next Agenda - Oct 9, 2024**
- 15. Adjournment**

# Township of Woolwich Heritage Committee Minutes

June 12, 2024

5:00 p.m. – 6:11 p.m.

Hybrid Meeting

Hosted in Council Chambers and on Zoom  
24 Church Street West, Elmira

Meeting Chair: Councillor Bonnie Bryant, Chair

Attended: Colleen Willard-Holt, Co-Chair  
Katy Boose  
Natalia Smiarowski  
Terry Bowman  
Dianna Weltz  
*Kim Hodgson*

Staff Present: Stacey Bruce, Committee Support Specialist  
*Sherwin Meloney, Planner*  
*Shawn Buckley, Supervisor, Transportation Infrastructure, Regional Municipality of Waterloo*

Regrets: Karen Cummings  
Marg Drexler

Italics indicates a virtual participant.

## Call to Order at 5:00 P.M.

## Land Acknowledgement

Chair Councillor Bonnie Bryant read a land acknowledgment.

## Disclosure of Pecuniary Interest

None.

## Adoption of Minutes

Moved by Katy Boose

Seconded by Co-Chair Colleen Willard-Holt

That the minutes of April 10, 2024, be adopted as amended and the minutes of May 8, 2024, be adopted as presented.

...Carried.

## Action Item Review

The committee reviewed their May 8, 2024 meeting action items.

Of special note, By-Law has inspected the old St. Boniface School and found no roof damage. It was observed to be in good repair, although some patches of different-colored shingles were noted.

**ACTION:** Natalia Smiarowski to further revise the “Pros and Cons and FAQs About Heritage Designations” and “Revised letter to the owners of currently listed properties being considered by the township for heritage designation to gauge their interest”

**ACTION:** Diana Weltz to respond to Emily Shuurmans to invite her to either the September 11<sup>th</sup> or October 9<sup>th</sup> Heritage Committee meetings.

There was no further discussion regarding this.

## ACO June Update

Planner Sherwin Meloney explained that Bill 200, *The Homeowners Protection Act* has been proposed with provisions to extend full protection to non-designated properties of cultural heritage value or interest by two years to January 1, 2027.

The committee questioned the expected timeline for the province’s passage of this bill.

**ACTION:** S. Meloney will update the committee on the expected date for the determination of Bill 200's passage.

There was no further discussion regarding this.

## West Montrose Bridge – Heritage Designation By-Law 60-2007 Amendment

The committee reviewed the heritage impact assessment for the West Montrose Bridge.

Moved by Katy Boose  
Seconded by Dianna Weltz

“Be it resolved that the Woolwich Township Heritage Committee accepts the proposal from the Region of Waterloo to remove the white cladding from the West Montrose Bridge so that visitors can see the inner workings of the bridge like the bailey truss.”

Questions were raised about the email proposal, included in the June 12<sup>th</sup>, 2024 Heritage Committee Meeting Agenda from Michelle Pinto, Senior Engineer, Transportation Rehabilitation (Design & Construction), Region of Waterloo to the Woolwich, Heritage Committee on the removal of interior white cladding from the West Montrose Bridge prior to its rehabilitation.

In response, Shawn Buckley, Supervisor of Transportation Infrastructure for the Regional Municipality of Waterloo, clarified that only the middle portion of the cladding is proposed for early removal, due to its poor condition, while it will remain at all four corners to conceal the bridge’s bearings and fire system, like in the bridge’s rehabilitation plan.

The intent of this proposal was described to save costs by removing the deteriorated cladding this year, which residents have raised concerns about due to its poor condition around their

observations of collapsing boards instead of conducting additional costly repairs in advance of its scheduled proposed removal during rehabilitation next year.

It was noted that the exposed historic interior of the bridge could be of public interest before the bridge is rehabilitated and that educational signboards are also proposed to be posted around the bridge to showcase and highlight the bridges exposed internal features like the steel bailey truss.

The committee discussed safety concerns regarding access to the bridge's interior by exploratory people and wildlife while management plans for this were emphasized.

Believing it would attract public interest, the committee approved this proposal.

...Carried.

The West Montrose Bridge Heritage Designation By-Law 60-2007 Amendment was discussed upon questioning from the committee.

At this point in the meeting S. Buckley left.

Moved by Terry Bauman

Seconded by Co-Chair: Colleen Willard-Holt

“Be it resolved that the Woolwich Township Heritage Committee recommends proceeding with preferred alternative C2 amendments to By-Law 60-2007 as described in the West Montrose Covered Bridge Cultural Heritage Impact Assessment Revision prepared by Unterman McPhail Associates for the Regional Municipality of Waterloo in April 2024.”

Sherwin Meloney, Planner, clarified the designation By-Law amendment process and By-Law 60-2007 amendment list for the Woolwich Heritage Committee, based on the West Montrose Covered Bridge Cultural Heritage Impact Assessment Revision prepared by Unterman McPhail Associates for the Regional Municipality of Waterloo in April 2024. He noted that alternative C2 amendments were the committee's prior suggestion.

The timeline for providing a response and recommendation to Council for future approval to proceed with rehabilitation under the *Ontario Heritage Act* was discussed. The potential impacts on the heritage attributes of the bridge were reviewed, including:

- The 100-year time capsule within the bridge from 1910 and plans for its removal and celebration.
- The in-kind replacement of materials removed from the bridge.
- Concerns about potential obstruction of the bridge's view due to vehicle height bars and the bridge's weight constraint signs, ultimately accepting their installation for safety reasons.

The future use of the bridge's steel for art and as cross markers at local trail crossings was considered based on its quality and potential modification but then was finally disregarded.

...Carried.

**ACTION:** S. Meloney to discuss with M. Pinto the committee's wishes to repurpose removed materials from the West Montrose Bridge and to be notified when construction starts.

**ACTION:** The committee to contact M. Pinto regarding locating the 100-year time capsule located within the cement of the West Montrose Bridge.

There was no further discussion regarding this.

## **Reclaimed Materials**

### Old Winterbourne School House Timbers

Kim Hodgson commented that she has not received a response via email from the region regarding this and will follow up with a phone call tomorrow.

### West Montrose Bridge

In response to M. Pinto, Engineer of Transportation Rehabilitation (Design & Construction) at the Region of Waterloo, regarding the repurposing of materials from the West Montrose Bridge, the committee confirmed their suggestion to create benches from the materials. S. Buckley had noted that an overall quality assessment of the white cladding is needed, and these panels would require gluing together to be suitable for repurposing. The committee emphasized a preference for larger timbers if suitable.

There was no further discussion regarding this.

## **Work Plan**

K. Boose announced that she does not have capacity to meet with the historical planner from Guelph as previously discussed.

**ACTION:** Co-Chair: C. Willard-Holt to connect with the interested historical planner from Guelph to set up a virtual meeting between 9-4 pm for interested committee members to attend.

There was no further discussion regarding this.

## **Heritage Day (Sept 24, 2024) Plans**

The committee discussed launching their ghost community tour for Heritage Day. Other ideas for Heritage Day were considered by the committee including resharing the Elmira walking tour materials, library displays, and electronic sign board displays. The committee also discussed social media posts for Heritage Day, including general heritage information, designated properties, WWII-related content, and the township's forbearers, to be posted leading up to and a few days after Heritage Day.

**ACTION:** Co-Chair: C. Willard-Holt to recirculate the Elmira walking tour information.

**ACTION:** Co-Chair C. Willard-Holt to connect with Township staff and coordinate the committee's Heritage Day Plans.

**ACTION:** K. Boose to connect with Rae Ann Bauman, Executive Officer, Woolwich Township to see what kind of timeline she needs regarding Heritage Day social media posts.

There was no further discussion regarding this.

## **New Business**

Stacey Bruce described the update underway to the Township's website highlighting that the committee's agendas and minutes will now be posted to the calendar, but that all of the past agendas and minutes will be available to the public by request. The committee questioned what the new website would look like and expressed concerns about being able to find information and navigate the new webpage.

**ACTION:** S. Bruce to invite Steph Hergott, IT project to the September 11<sup>th</sup> Heritage Meeting to provide a tutorial of the new heritage section of the Township's website.

**ACTION:** All committee members to review the new heritage website before the September 11<sup>th</sup> meeting to provide feedback.

There was no further discussion regarding this.

## **Items for the Next Agenda – Sept 11, 2024**

Following up on the interest of an owner to designation a property with a unique old stone porch, including gathering necessary designation materials for this as well as obtaining a copy of a collection of photographs of very old houses in the area from a senior community member were discussed.

**ACTION:** N. Smiarowski volunteered to take heritage pictures within the community as needed.

An update was provided that the committee is awaiting scanned pictures for the Elmira Carnegie Library Cultural Heritage Evaluation Report. Further details were also noted as needed for this report regarding determining any changes made to the exterior of the building overtime.

There was no further discussion regarding this.

## **Adjournment (6:11 P.M.)**

Moved by K. Boose

Seconded by Co-Chair C. Willard-Holt

That the meeting be adjourned to meet again on Sept 11, 2024.

...Carried.

Recorder: Stacey Bruce, Committee Support Specialist

### **Action Items from the June 12, 2024 Heritage Committee Meeting**

**ACTION:** Natalia Smiarowski to further revise the “Pros and Cons and FAQs About Heritage Designations” and “Revised letter to the owners of currently listed properties being considered by the township for heritage designation to gauge their interest”

**ACTION:** Diana Weltz to respond to Emily Shuurmans to invite her to either the September 11<sup>th</sup> or October 9<sup>th</sup> Heritage Committee meetings.

**ACTION:** S. Meloney will update the committee on the expected date for the determination of Bill 200's passage.

**ACTION:** S. Meloney to discuss with M. Pinto the committee’s wishes to repurpose removed materials from the West Montrose Bridge and to be notified when construction starts.

**ACTION:** The committee to contact M. Pinto regarding locating the 100-year time capsule located within the cement of the West Montrose Bridge.

**ACTION:** Co-Chair: C. Willard-Holt to connect with the interested historical planner from Guelph to set up a virtual meeting between 9-4 pm for interested committee members to attend.

**ACTION:** Co-Chair: C. Willard-Holt to recirculate the Elmira walking tour information.

**ACTION:** Co-Chair Colleen to connect with Township staff and coordinate the committee’s Heritage Day Plans.

**ACTION:** K. Boose to connect with Rae Ann Bauman, Woolwich Township to see what kind of timeline she needs regarding Heritage Day social media posts

**ACTION:** S. Bruce to invite Steph Hergott, IT project to the September 11<sup>th</sup> Heritage Meeting to provide a tutorial of the new heritage section of the Township’s website.

**ACTION:** All committee members to review the new heritage website before the September 11<sup>th</sup> meeting to provide feedback.

**ACTION:** Natalia Smiarowski volunteered to take heritage pictures within the community as needed.



**Heritage Committee – Work Plan – June 12, 2024**

<b>PRIORITY #1 – Heritage Designations with Assigned Committee Members: D. Wetzl, N. Smiarowski &amp; K. Boose</b>				
<b>LEAD</b>	<b>ACTION</b>	<b>STATUS</b>	<b>TIMING</b>	<b>NOTES</b>
Co-Chair Colleen Willard-Holt	To connect with the interested historical planner from Guelph to set up a virtual meeting between 9-4 pm for interested committee members to attend.	ongoing	Summer 2024	Interest from a historical Guelph member to attend a meeting as a resource. The committee discussed inviting him tentatively in early fall. Centre Wellington and Guelph Committees were not interested in invitations.
Katy Boose and Natalia Smiarowski	To complete the architectural style information necessary for the Cultural Heritage Evaluation Report for the Elmira Carnegie Library designation.	ongoing		Resource material and specific features discussed relating to evaluating this
Dianna Wetzl	to invite Roger Miller to be a resource relating to architectural aspects of Heritage Designations for the committee.	ongoing	Sept 11, 2024	
Chair Councillor Bonnie Bryant	To locate an architectural reference book	ongoing		
Chair Councillor B. Bryant	To reach out to past committee member Marg Rommer as a research proposal resource.	ongoing		
D. Wetzl	To connect with Emily Shuurmans to get her perspective and report back to the committee.		Sept 11, 2024	
Chair Councillor B. Bryant and Marg Drexler	To visit the St. Boniface Church, Manse, and Cemetery site to determine features of interest.	ongoing		
M. Drexler	To carry out research on the altars and altar craftsman pertaining to the St. Boniface Church, Manse, and Cemetery Cultural Heritage Evaluation Report.	ongoing		
	To re-connect with S. Meloney to determine what pictures and video reference materials	ongoing		Has some research and video materials that can be provided

	around the unique iron cross and local stone are needed for the cultural heritage evaluation report for the St. Boniface Cemetery, Church, and Manse			
All Committee Members	To revisit the preparation of the draft letter, including information on the pros and cons of heritage designation for owners of current listed properties being considered by the Township to gauge their interest in this.	ongoing		Revised letter presented to the committee May 8th – to be circulated among the committee and to S. Meloney for feedback and approval before being sent to current owners of heritage listed properties
Stacey Bruce	To circulate the pros and cons and FAQs about heritage designations and revised letter to the owners of current listed properties being considered by the township for heritage designation to gauge their interest to the committee.			More revisions are needed before approval
N. Smiarowski	To contact Sherwin Meloney to get his approval to send the revised letter to the owners of current listed properties being considered by the township for heritage designation to gauge their interest.			More revisions are needed before approval
All Committee Members	To compile a list and description of properties in their own community of areas of interest to be included in a brochure and bring to the next meeting	ongoing		Discussed narrowing down and focusing on 10 properties in the prototype brochure that are already designated. Considering making owners aware of the project and including 2-3 properties per settlement. Elmira Townhall, Carnegie Library and Bandstand, Downtown, Stockyards, Old St. Jacob's School, Theatre or Library, 3 Maryhill Hotel Properties, Old Cemetery, Church, Manse and School as a cluster, along with properties from Winterburn and Conestogo - potentially the old house

				with a pond, Ruggles store in Breslau and Floradale properties; Bloomingdale United Church and Old Inn as well as Barns or Bridges, specifically, the Glasgow or Peel Street bridges, and the limited options other than a school in Hawkesville were considered of interest among others.
<b>PRIORITY #2 – Digital Sign Board at the WMC with Assigned Committee Members: C. Willard-Holt and D. Weltz</b>				
<b>LEAD</b>	<b>ACTION</b>	<b>STATUS</b>	<b>TIMING</b>	<b>NOTES</b>
Chair Councillor B. Bryant	To connect with the Township to determine if a summer student’s help is available to assist with the Digital Sign Board project	ongoing		
<b>PRIORITY # 3 – Brochure &amp; Slideshow with Assigned Committee Members: K. Boose, N. Smiarowski</b>				
<b>LEAD</b>	<b>ACTION</b>	<b>STATUS</b>	<b>TIMING</b>	<b>NOTES</b>
K. Boose & N. Smiarowski	To create a prototype brochure with input from the Maryhill Historical Society and share this with all committee members when prepared	ongoing		K. Boose shared a draft slideshow of properties of interest to include for feedback
K. Boose	To reach out to printerries in Woolwich for brochure quotes	ongoing		Has a quote from a St. Jacob’s printer but is still waiting on a response for another from Simpson Printing in Bloomingdale and will follow up again
	To return forms to Marg Drexler relating to scanning and sharing the Cultural Heritage Resource Evaluation Form to share with the committee.	ongoing		
	To obtain a map for the prototype brochure from Lisa Atkinson, GIS Analyst, Township of Woolwich.	ongoing		
	to call the Bloomingdale United Church to obtain permission to use photos from their website in the brochure.	ongoing		

K. Boose	To take 1 or 2 more photos of properties of interest and add these to the brochure and related PowerPoint	ongoing		Has received some photos and plans to take other photos personally as necessary, Lisa Atkinson determined as the best property photo contact person at the Township
N. Smiarowski	To look into other properties of interest to include in the brochure.			
D. Weltz	To help K. Boose to collect photos for the brochure	ongoing		
	To explore updating the heritage display at the Carnegie library	ongoing		Local Architectural Conservation Advisory Committee (LACAC) reports suggested as a resource and connected with a resource person at the library
N. Smiarowski	To locate and photocopy the walking tour reference material from the Carnegie Library	ongoing		
C. Willard-Holt	To update the Woolwich Township Ghost Community Driving Tour Handout based on suggestions from the committee.	ongoing	Sept 11, 2024	
C. Willard-Holt & N. Smiarowski	To revisit the preparation of the ghost community tour material to utilize in slideshows and heritage committee education materials	ongoing	Sept 11	C. Willard-Holt presented a draft slideshow to the committee for feedback
Kim Hodgson	To reach out to EDSS teachers to determine whether utilizing students in partnerships is an option	ongoing		Has connected with Ms. Cressman, EDSS Art Department Head, about a collaboration with students on a digital visual arts project
<b>PRIORITY TBD – Heritage Road Show</b>				
<b>LEAD</b>	<b>ACTION</b>	<b>STATUS</b>	<b>TIMING</b>	<b>NOTES</b>
Chair Councillor B. Bryant	To reach out to retired geography teacher Warren Stout as a resource	ongoing		Has run bus tours in the past
<b>PRIORITY TBD – Reclaimed Materials</b>				
<b>LEAD</b>	<b>ACTION</b>	<b>STATUS</b>	<b>TIMING</b>	<b>NOTES</b>

Chair Councillor B. Bryant/All Committee Members	To determine how cast-off materials from the Old West Montrose Bridge will be transported or stored for a fundraising initiative if acquiring them is feasible.	ongoing		
Chair Councillor B. Bryant	to suggest to Michelle Pinto, Engineer Transportation Rehabilitation (Design and Construction), Region of Waterloo that the committee would like cast-off timbers from the Old West Montrose Bridge to be built into benches or picnic tables for the Township.	ongoing		The committee has suggested benches to M. Pinto
K. Hodgson	To contact a local museum about taking Winterbourne Schoolhouse timbers	ongoing	Sept 11, 2024	
<b>PRIORITY TBD – Lost Resources</b>				
<b>LEAD</b>	<b>ACTION</b>	<b>STATUS</b>	<b>TIMING</b>	<b>NOTES</b>
All Committee Members	Revisit locating missing framed heritage committee property pictures last seen at a Wilmont Bankers Day Event.	ongoing		
<b>PRIORITY TBD – Newspaper Interest Column</b>				
<b>LEAD</b>	<b>ACTION</b>	<b>STATUS</b>	<b>TIMING</b>	<b>NOTES</b>
All Committee Members	To revisit the idea of a “Do you Recognize” interest column in the Record with prizes donated from local businesses			

# Kissing Bridge with cladding removed:



**West Montrose Covered Bridge Rehabilitation 2025**

Region of Waterloo

**Rehabilitation**

**Existing**

- 01 Assess World War II era steel truss
- 02 Re-install lat and strip sheathing surface after replacement of full operational deck
- 03 Replace steel hanger rods

**Post Rehabilitation**

- 01 Re-install interior cladding in short section at each end of the bridge

Scan QR Code for more detail:

SCAN ME

**West Montrose Covered Bridge Rehabilitation 2025**

Region of Waterloo

**Background**

The West Montrose Covered Bridge, built in 1883 by John and Benjamin Bear, is the last remaining covered bridge in Ontario. In 2007, Township of Woolwich By-Law Number 60-2007 designated the West Montrose Covered Bridge to be of cultural heritage value or interest.

**Rehabilitation**

The following is a summary of the rehabilitation that will start in 2025.

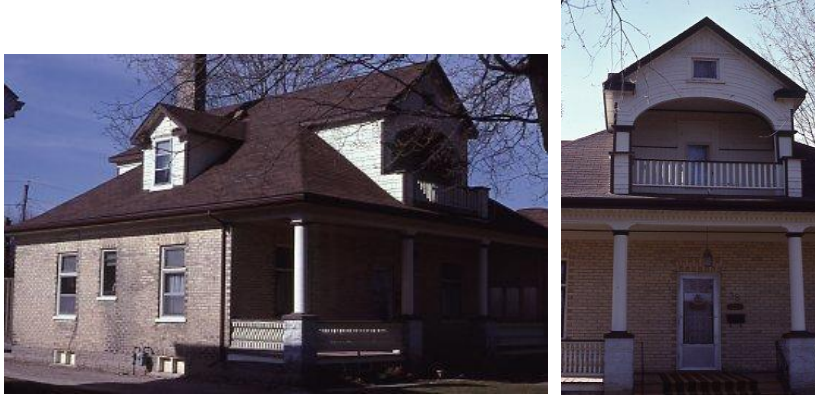
**Existing** **Post Rehabilitation**

- 01 Bridge sag reduced
- 02 Replace exterior wood cladding
- 03 Replace roof with new cedar shingles
- 04 Replace window louvers

## Elmira Walking Tour Route 2

*Note: Most of the buildings on this tour are privately owned; please respect the rights of the owners.*

### 1. 38 Hampton Street West



The Regency style of this house is unusual in Elmira. The style is characterized by a square, 1-1/2 stories, and low hip roof which gives the house a cottage-like appearance. The Regency style was developed during the Regency of King George IV (1811-1820), but was popular in Canada in the mid-nineteenth century. Notice the gable with the vaulted ceiling in the front roof, a gable known as a nun's coif. These gables, as well as the slightly bell-cast shape of the roof, were decorative Regency features.

The first story veranda incorporated as an integral part of the roofline was an important contribution of the Regency style. Many Regency verandas were trimmed with geometric latticework, or Treillage, but the trim on this house is relatively simple. Like the Georgian style, the Regency house has a central doorway and symmetrically placed windows; however, the Regency doorway is smaller and the windows larger than in the Georgian. The pressed glass in the upper panes in this house give additional importance to these windows. The overall effect of these Regency features is romantic and sweet—that of a cottage designed to look out on a garden—in contrast to the solid and more formal appearance of the Georgian house.

### 2. 36 Hampton Street West



At the turn of the twentieth century this Italianate house was the Methodist parsonage. At that time a veranda trimmed with spoolwork under the eaves extended across the front of the house. The garage in back was once a two-story barn.



The Wesleyan pioneer preacher Charles Fish worked in the area in 1848, and the small group of Methodists used the first log school (located on the present site of the Foundry apartments on E. Church Street) as a meeting place. In 1855 a small brick church was built on Church Street—thus the street got its name. Around 1875 the Methodists built a larger brick church in the simple Upper Canada Gothic style on Arthur Street N.

### 3. 30 Hampton Street West



Exterior

Interior

Notice the beautiful oval window on the east wall of this house set in decorative brickwork. The stained-glass window is concave and set in frame of decorative brickwork. Such fine craftsmanship expresses the individual taste of the builder.

### 4. 26 Hampton Street West



Notice the rounded veranda—a variation on the bandshell porch—on this early 1900's Queen Anne Revival house. Found on several Elmira houses of the period, this style porch softens the line of the house and does not block light. The variety of window shapes (notice the round stained-glass window on the first story), the decorative drip mouldings and the stained glass in the upper portion of the windows are characteristic Queen Anne features. The spoolwork under the roofline is also a common feature of the local Queen Anne house.

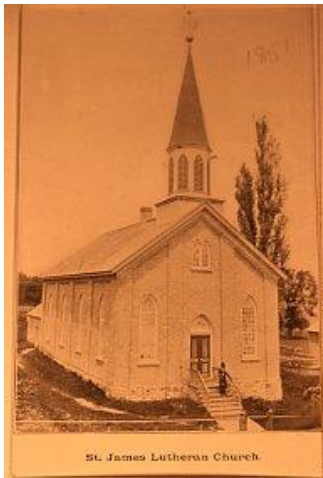
### 5. 17 Walker Street





Look across Wyatt Street to the small frame house on the corner. This house stood on the site of the Clock Tower. The house was moved by draft horses in 1912 when the Clock Tower was built. The owner at the time, Aaron Hoffer, was a former reeve and operated a felt bootee factory in Elmira. The present owners bought the house from a newspaper man who worked for the *Elmira Signet*.

#### 6. St. James Evangelical Lutheran Church, 60 Arthur Street South



1869 church



The Lutheran congregation was organized in 1850. The corner lot was purchased for 11 pounds and five shillings, and a log building was constructed on the site of the present church. In 1869 a yellow brick church in the Upper Canada Gothic style was built (shown in the 1903 photo on the left). The plot of land at the rear of this church was used as a burial ground from 1850 to 1884. In 1875 a pipe organ built by George Vogt of Elmira, an innkeeper and a noted organ builder, was installed in the church. This organ, transferred to the new building and rebuilt and enlarged in 1951. It was not replaced until 1975.

The present church was built in 1914-15. **Notice that the cornerstone of the former church is set in the front façade.** The interior was renovated in 1954 and the new wing at the back added in 1963. Like many Ontario churches, St. James is a mixture of styles and thus hard to classify. The pointed-arch windows and doors as well as the wooden tracery on some of the windows are in the Gothic Revival style popular in church architecture. But the asymmetrical design of the two towers—the bell tower is square while the shorter tower is octagonal with a battlement top—suggests Italianate influence. The focal point of each flank wall is a broad round-headed window set under a central gable. This window shape is Italianate, while the wooden tracer in the upper portion is Gothic.

Notable in the interior of the church is the ornate Gothic altarpiece and the floral motif of the stained glass.

#### 7. 75 Arthur Street South



Cross Arthur Street and walk south to No. 75. This is the Wylie House, built in 1860, it is one of the oldest structures in Elmira. Its first owner, August Blatz, was a shoemaker who had immigrated from Germany. Like many craftsmen of his day, he had his workshop next to his home—where the front left side of the building to the house is now. The Wylies were relatives of Blatz. This 1-1/2 story house of Georgian proportions has changed over the years, but the clapboard exterior, two interior doors and the plank flooring remain from the original house. The 6-pane over 6-pane windows on the side of the house are original. The shutters which were added by the Wylie family in the 1970's or 80's, are over 140 years old. They were taken from a Wylie family home in Floradale.

The porch is old and may be original. Note the vaulted roof, the delicate vergeboard, and post lifts on the turned pillars. The rear addition, which nicely echoes the simple style of the original house, was constructed in 1938, while the dormers are likely a later addition. An attractive and unusual feature of the house is the simple but decorative vergeboard trimming the front and sides of the house just below the eaves.

#### 8. The Clock Tower, 69 Arthur Street South



Formerly the Township Hall, this building was constructed in 1912 as the post office with customs office on the second floor and an armoury in the rear portion. The township took over the building in 1966 when the new post office was built. The style of the original portion of the building defies easy classification, but the vernacular combination of features from several styles is very like many other public buildings of this period in many small Ontario towns. Perhaps “Ontario Post Office Style” would be a suitable label for these buildings.

The impulse behind such buildings is to achieve the imposing and thus trustworthy appearance required of public buildings at the time—but to do so on a relatively modest budget. Stone would be the obvious choice of building material for an imposing and solid look, but in this area the cost of stone would have been prohibitive. So the structure is of the familiar red brick trimmed with a healthy quantity of stone in the doorway surrounds, the rusticated sills and the keystones over every window and door. The offset square tower, and Italianate feature, lends an additional air of importance to the building. The slightly bell-cast shape of the hip roof and tower roof is another feature which is decorative rather than functional, and the combination of both flat-topped (first story) and round-headed windows (second story) is found in both Italianate and Classic Revival buildings.

Features from the Classical style of architecture also play an important role here, as in many old public buildings. The prominent keystone over the windows and doors has its roots in the Classical style, as do the gables (triangle shapes) breaking the eaves line. The segmented stone doorway surrounds with heavy lintels (the wide band at the top of the door) suggest the Classical style, but the relative simplicity of the square cut masonry gives these doorways a modern streamlined flavour.

Look for 2 walled in doorways: a second entrance left front and in the rear portion of the original building, which led to armoury. Photos of the original building show an interesting semi-circular balcony protruding from the second story where the 1985 addition is now. The balcony was part of an apartment in which the building custodian lived.

#### 9. Elmira Library, 65 Arthur Street South



The land for the Elmira library was donated in 1912 by August Kimmel, a founder of the Elmira Felt Co. and a leading Waterloo County industrialist. A board and batten shop which served as Henry Hahn’s cooperage then stood on the corner site. Also on the site was the Henry Hahn house that stands at



Wyatt and Memorial Streets directly behind the library. From the 1903 Pig Fair Day photo above, this house is possibly the brick one partially behind the tree on the right.

Like many small towns in North America, Elmira obtained from Andrew Carnegie for the library building. The 1912 portion of the building fulfills Mr. Carnegie's requirement of a functional rather than a pretentious building. He favoured one-story libraries with plain ornamentation for small communities. The only ornamental work is a Romanesque arch and semi-circular transom light over what was then the main entrance, with a small classically-styled portico consisting of a triangular pediment with dentils and Ionic columns.



During the winter of 1977-78, an addition was added to the south and east sides of the 1912 building which doubled the area of the library. The new addition was sympathetically designed to reinforce the original architectural features. The addition was set back from the front façade, leaving the focus on the original building, and the rounded windows echo the semi-circular arch over the original main entrance.

Continue along Wyatt Street East. Note the site of the Elmira rink and the lawn bowling club, demolished in 1939, where the Beer Store stands now.

#### 10. 17 and 19 Wyatt Street East

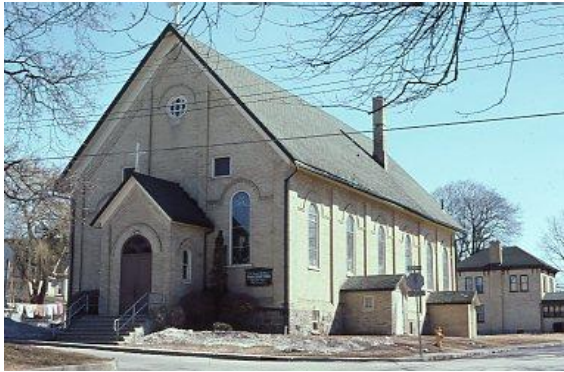


These twin houses were built by the well-known local mason, Charles Wilken, who also did the masonry on the Great West Felt Co. at the north end of Elmira. He built No. 19 for himself about 1907 and then built No. 17 shortly thereafter for his wife's sister who wanted an identical house. One difference

between the original buildings was in the foundation blocks; Charles' son Walter relates that the sister-in-law and her husband spent evenings through the winter making the blocks for No. 17 by hand.

The geometric latticework or treillage (a Regency feature) over the verandas is a special feature of these houses. The turned posts are also original, and the bottom railing of the upper veranda on No. 17 is probably original while that of No. 19 has been replaced. Notice also the delicate scrollwork at the top of the Italianate round-headed windows.

#### 11. 26 Wyatt St East, former site of St. Teresa of Avila Church



This former church was built in 1889 to serve the Roman Catholic population. It replaced the small frame church, built in 1851, on the site of the Catholic cemetery north of Elmira. Some of the wood from the frame church was used in the construction of the present building. The round-headed windows and door give the building an Italianate flavour, but the dominant theme here is simplicity. Lacking a tower or steeple, the decorative features are the arcading between the plain pilasters set at intervals along the flank walls, the corbelled brick embellishing the cornice, the extended drip mouldings linking the windows, and the bulls-eye window at the front.

Originally, the church extended the length of four windows only, but in 1916 an addition was made to the rear of the nave. This addition is hardly noticeable because care was taken to match the colour of the brick and the architectural features of the original building.

#### 12. 19 Centre Street



Built in the 1880's, this house is a vernacular mixture of styles often found in the local architecture. The irregular floor plan and the roofline of the house are Queen Anne Revival, while the narrow, paired round-headed windows, ornated eaves bracketing, and the double doors are Italianate features. The

yellow brick accenting at the corners and over the windows adds another decorative vernacular touch to the house.

In 1903 this was the home of George Auman, reeve and member of the Woolwich Township Council for six years. He was a prosperous livestock dealer.

### 13. 17 Centre Street



The octagonal turret extending from the two-story bay at the centre front of this house is a distinctive feature of some Queen Anne Revival houses. Notice that the veranda follows the octagonal shape of the turret. Originally, five full-length windows offered a view from the outward-facing sides at the top of the turret, and there were no rails on the veranda.

The house was built for L. A. Jeanneret, a local jewelry store owner and real estate entrepreneur. He was a member of the Elmira Board of Trade in 1903.

### 14. 18 and 20 Centre Street



18

20

These similar houses are fine examples of the local variety of Italianate architecture. Again, the ornate frieze, paired eaves brackets and the paired round-headed windows are typical. It is interesting to see how differently two such fundamentally similar houses have evolved.

The upper porch of No. 18 retains the original wrought-iron cresting, which was also a common feature of the Second Empire style. This house originally had a wraparound porch like the one on No. 20. The original posts and brackets remain on the present porch.



The wraparound porch on No. 20 is a later addition. The original porch was like the present one on No. 18. The posts and brackets on the new porch are replicas of those on the original porch, but the spooled balusters were added with the new porch, giving it a somewhat colonial look. Typically Italianate, the round-headed double doors are original.

No. 18 was built in the late 1880's by William M. Behrens, a salesman in the general store of Messrs. Weber and Erb. He was treasurer of the Elmira Musical Society for many years and an officer of the Elmira Public Library.

#### 15. 10 Centre Street



This house built in the Ontario House style in the 1870's, was the home of John Ratz, Elmira's first reeve. Among the oldest remaining homes in Elmira, this one has several notable features. The brickwork on this house, with the inset panel design on each wall, is more sophisticated than one usually finds in a house of this style. Notice too the graceful wooden tracery in the gothic windows at the front and south side.

In 1869 John Ratz and his brother Jacob bought up all the stock in the Elmira Flouring Mills, one of the oldest industries in Elmira. John Ratz became sole proprietor in 1875, and the firm continued under his three sons after his death in 1889. In 1904, John's son Simon built the neighbouring Queen Anne Revival style house at 20 Mill Street.

#### 16. St. Paul's Evangelical Lutheran Church, Mill and Centre Streets



The present St. Paul's building is the third used by the congregation in its 165-year history. Originally, the congregation met in a church behind the Foundry residence on Church Street. Then a church was built beside the present location.

On January 2, 1889, the congregation decided that the current building was no longer adequate, and the cornerstone of the present church was laid in June of 1889. The cost of the building was \$4,920.49, with all but \$600 being paid by the day of dedication in November, 1889. The building is a slightly smaller version of a plan drawn by W. H. Schmalz for St. Paul's Lutheran Church in Kitchener. The style is Upper Canada vernacular Gothic (a popular church style described in MacRae and Adamson's *Hallowed Walls*), with pointed-arch windows and doors emphasized by drip mouldings which connect the windows. The bays of the nave are defined by pilasters set at intervals along the flank walls and decorative brick at the cornice. The 125-foot square-based tower is topped by an octagonal spire, and small pinnacles on the corners of the church add to the vertical upward-pointing effect typical of the Gothic style.

The parish hall was added in the early 1960's and new front and side entrances echoing the style of the original building were added in 1982. The original building had coloured glass windows during the years of World War I. Three lovely stained glass windows in the chancel have also been removed and the openings filled in. However, the special Bullas glass window depicting Luther inside the front entrance is an original window.

Hidden beneath the ceiling tile in the nave and chancel of the church is a hand-painted ceiling reputed to have been done by a traveling artist. A gold border in the chancel is all that remains of this work.

#### 17. 22 Duke Street





Turn right off Mill Street to Duke Street. The well-preserved Queen Anne Revival house at 22 Duke Street was built around 1900 for Oscar Ruppel who was in the hardware business with the Weichels. The geometric latticework, brackets and spoolwork under the porch eaves is all original. Notice the irregular floor plan, the variety of window shapes and the lovely stained glass typical of the style. The 1903 photo shows a belvedere and widow's walk at the top of the house and finials on the gables.

#### 18. 24 Duke Street



At the beginning of the 20<sup>th</sup> century, this Queen Anne revival house was one of the most elegant in Elmira. It was the home of John S. Weichel whose father started a hardware store that operated for many decades. Incorporating some of the more fanciful features of the Queen Anne style, the house originally had a large two-story veranda with double and triple rounded pillars, and a small balcony extended in front of the turreted gable. Some of the former stylishness of the original house is still evident in its numerous irregular angles and the fanciful variety of gable and window shapes. For example, notice the Palladian windows in the attic gables.

*This heritage walking tour was updated by members of the Woolwich Township Heritage Committee in Summer, 2024, from the compilation completed by Susan Bryant and Bertha Thompson in December,*

*1985. Additional work was done by Art Gorman in 1989. We thank Stacy Willingham, Archivist at the Waterloo Regional Archives, for her significant assistance.*