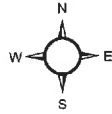
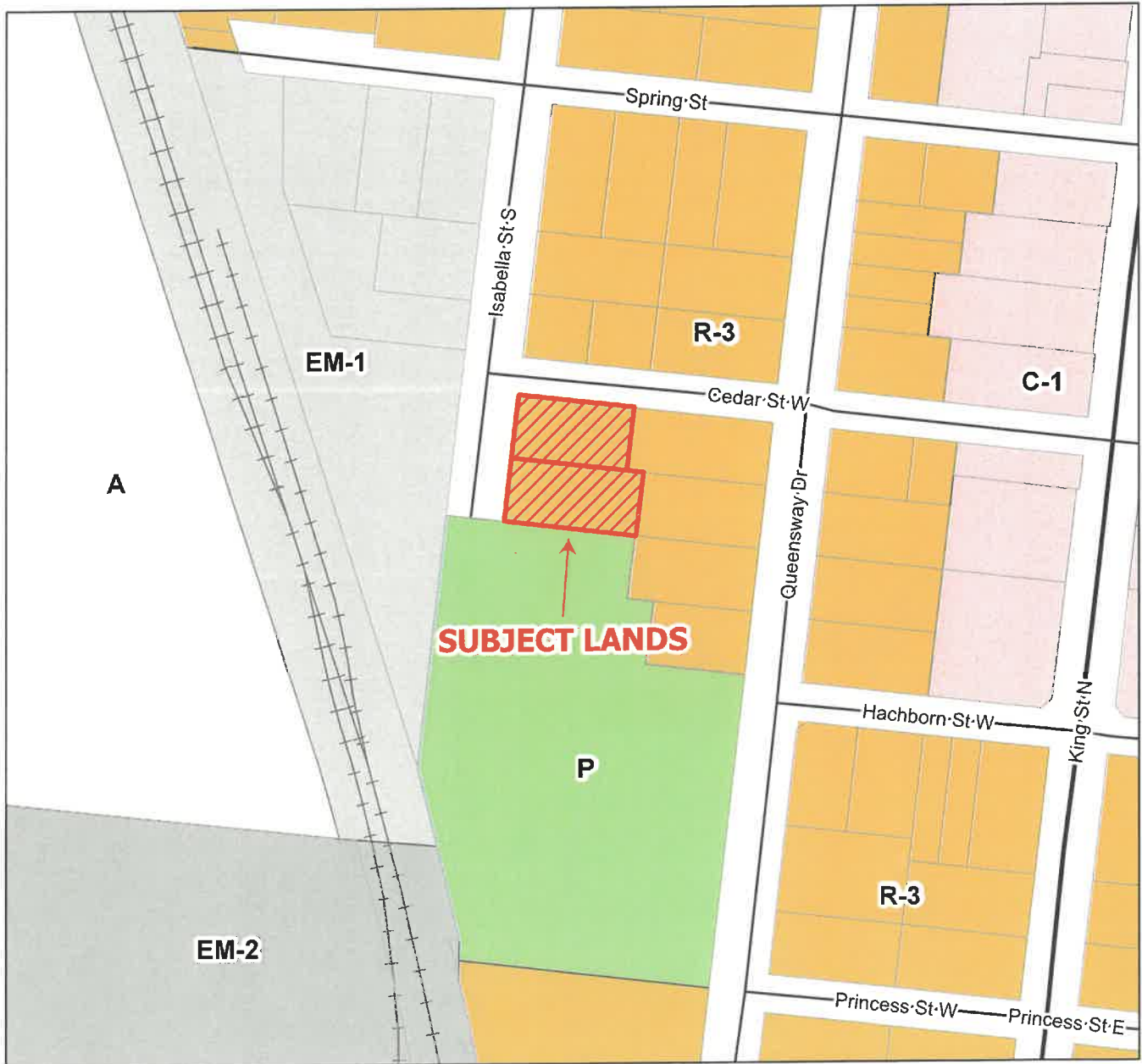
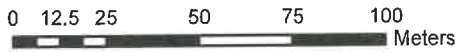


MAP 1 - Zoning
File Number: Minor Variances
A 14 - 17/2024
Consent Applications B 14 - 20/2024

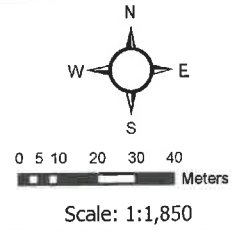
LOCATION: 49 and 55 Isabella Street
South, St. Jacobs



Scale: 1:1,950

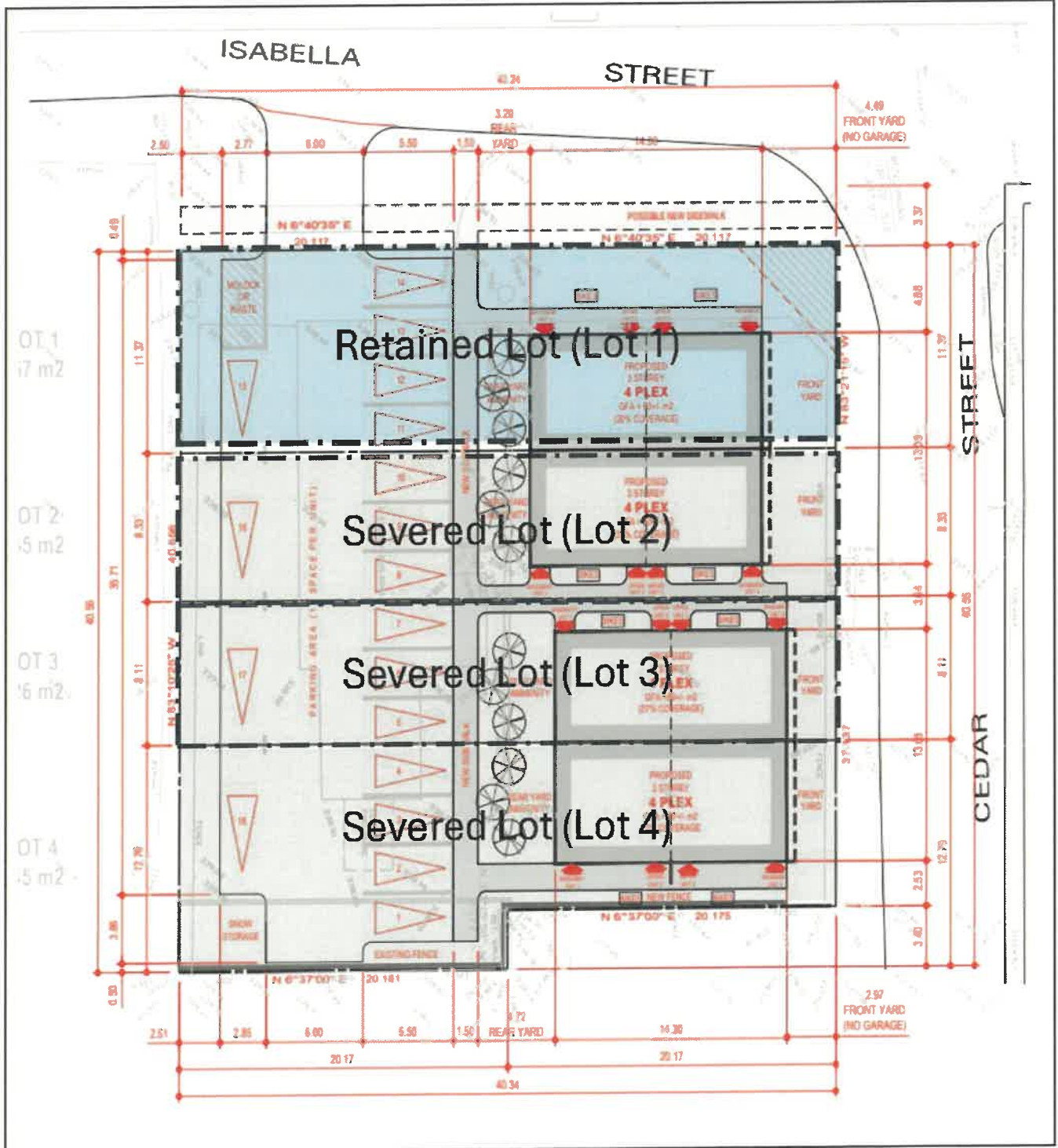


MAP 2 - Aerial Photo
File Number: Minor Variances A 14 - 17/2024
Consent Applications B 14 - 20/2024
LOCATION: 49 and 55 Isabella Street South,
St. Jacobs



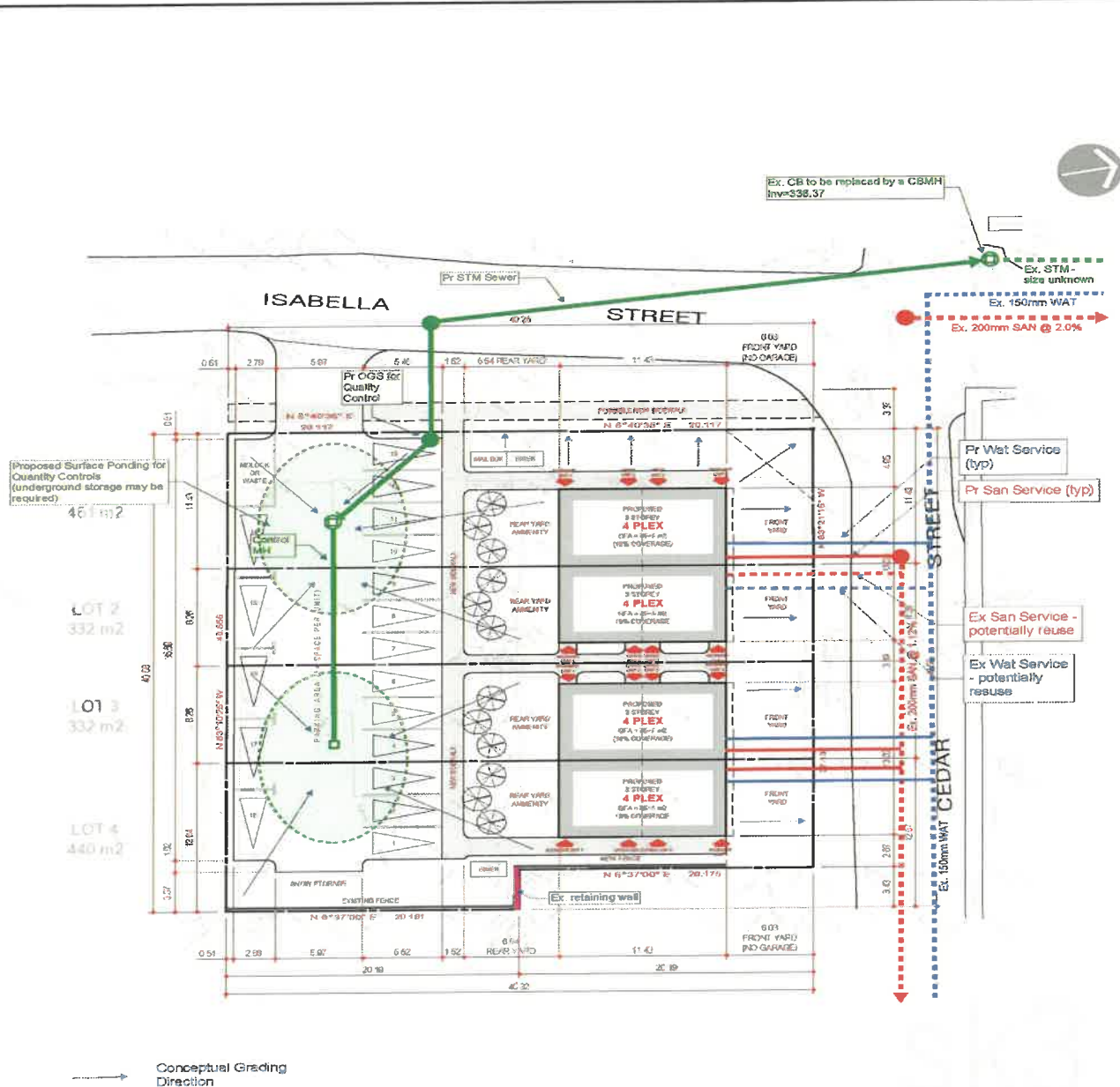
8/29/2024

MAP 3 - Conceptual Severance Plan
File Number: A 14 - 17 /2024 and B 14 - 20/2024
Location: 49 and 55 Isabella Street South, St. Jacobs



MAP 4 - Conceptual Grading and Servicing Plan

File Number: A 14 - 17 /2024 and B 14 - 20/2024
 Location: 49 and 55 Isabella Street South, St. Jacobs



Conceptual Grading Direction

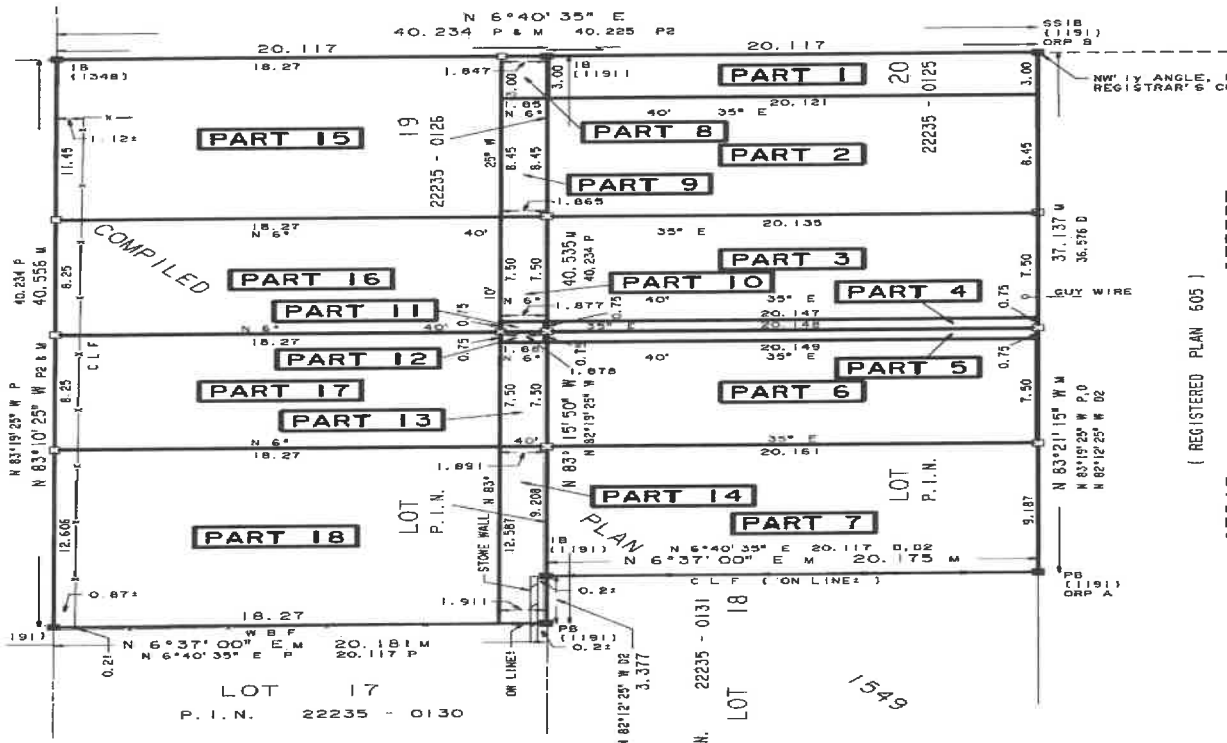
DRAWING: Conceptual Grading and Servicing		
DRAWN BY: MS	CHECKED BY: BRE	SCALE: NTS
FILE NAME:	DATE: May 9, 2024	Figure 1

MERITECH
 engineering
 1315 Bishop Street South, Suite 202 Cambridge
 T 519.623.1140 F 519.623.7334 www.meritech.ca

MAP 5 - Conceptual Easement Plan

File Number: A 14 - 17 /2024 and B 14 - 20/2024

Location: 49 and 55 Isabella Street South, St. Jacobs



PART	AREA(m2)	Lot	Easement
1	60.4	1	Pedestrian, Bike Parking, Mail access
2	170.1	1	NA
3	151.1	2	
4	15.1	2	Pedestrian
5	15.1	3	Pedestrian
6	151.2	3	
7	185.5	4	
8	5.6	1	Pedestrian
9	15.71	1	Pedestrian
10	14.0	2	
11	1.4	2	Pedestrian
12	1.4	3	Pedestrian
13	14.1	3	Pedestrian
14	23.9	4	Pedestrian
15	209.2	1	Pedestrian, Parking, Stormwater
16	150.7	2	Pedestrian, Parking, Stormwater
17	150.7	3	Pedestrian, Parking, Stormwater
18	230.1	4	Pedestrian, Parking, Stormwater

MAP 6 - Conceptual Building Renderings
File Number: A 14 - 17 /2024 and B 14 - 20/2024
Location: 49 and 55 Isabella Street South, St. Jacobs

Conceptual Renderings (for discussion)

